

Report No.: 1

Test Time: 25.02.2020 15:10

Luminaire Property

Luminaire Manufacturer:

Luminaire Description: FT 190 60W 3000K 2x25-90 rp.

Luminous Length (mm): 578

Luminous Width (mm): 190

Luminous Height (mm): 73

Voltage: 229.2 V

Current: 0.264 A

Power: 59.54 W

Power Factor: 0.982

Photometric Results

CIE Class: Direct

Total Rated Lamp Lumens: 9063.6 lm

Measurement Flux: 9063.6 lm

Efficiency: 100%

Downward Ratio: 99%

Upward Ratio: 1%

Field Angle(C0/C180,C90/C270,C45/C225,C135/315): 156.0, 113.1, 129.4, 127.6

Beam Angle(C0/C180,C90/C270,C45/C225,C135/315): 127.1, 62.0, 97.9, 92.9

Luminaire Efficacy Rating (LER): 152.28

Central Intensity: 1137.85 cd

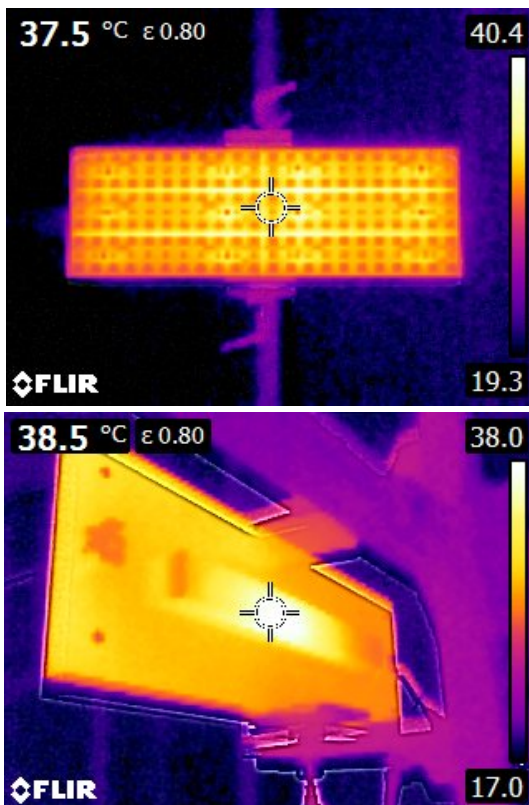
Max. Intensity: 6047.9 cd

Pos of Max. Intensity: H270 V20

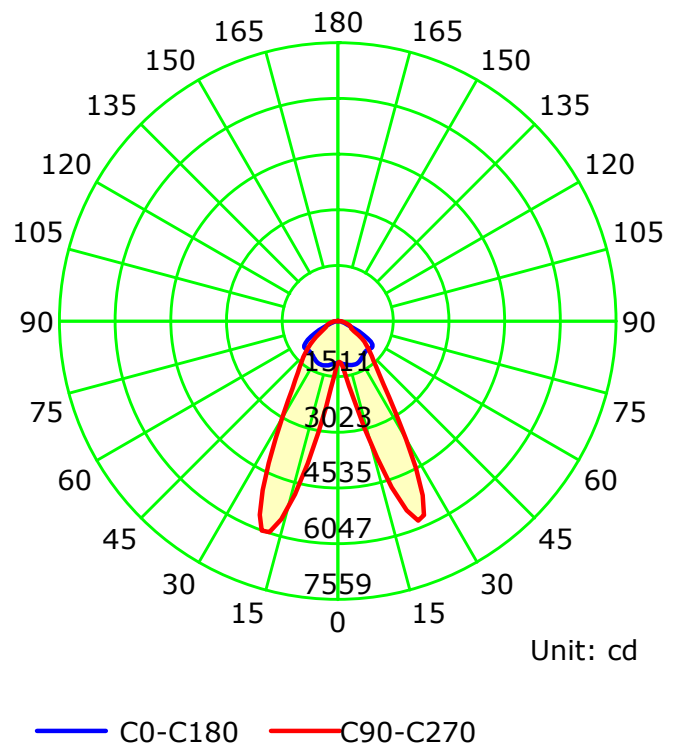
S/MH(C0/C180): 1.55

S/MH(C90/C270): 1.84

Termogramma



Luminous Intensity Distribution Curve



C Plane (°):0.0-360.0: 22.5

Gamma Plane (°):0.0-180.0:2.0

Test Lab:

Test Device: LSG-1800B

Test Type: TYPE C

Distance: 12.677 m

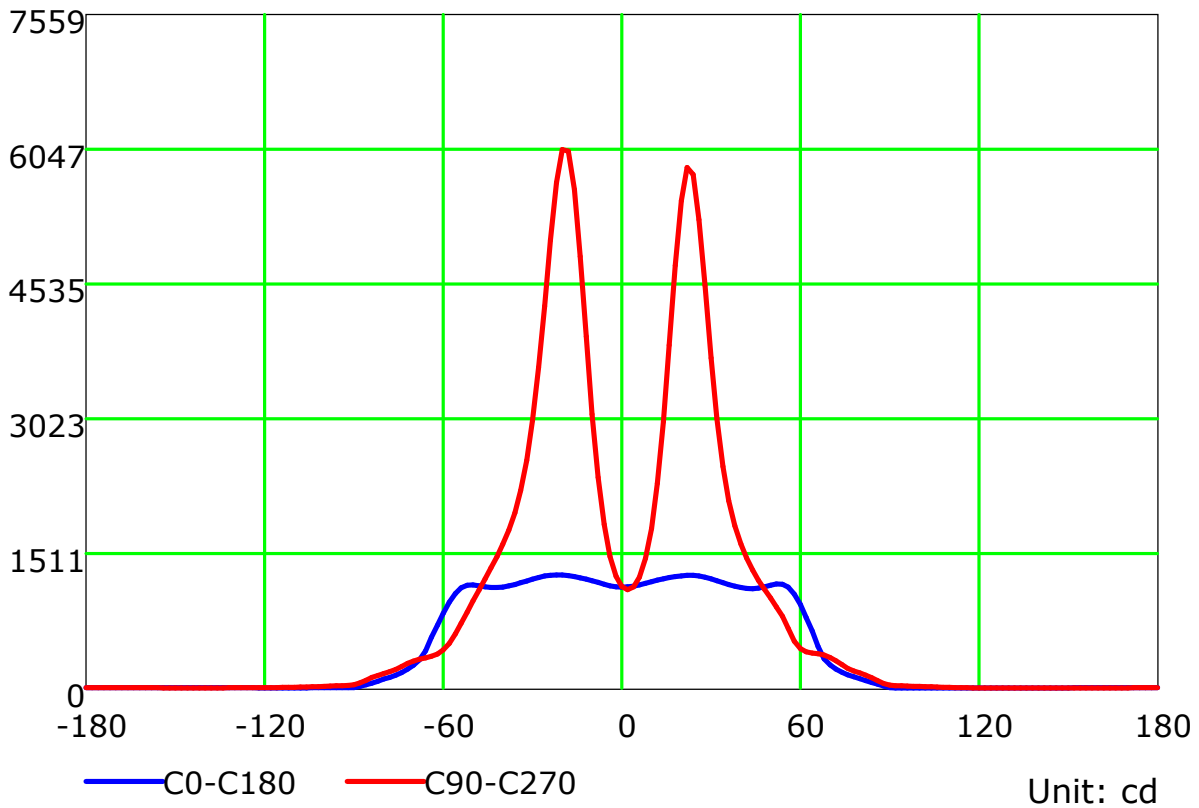
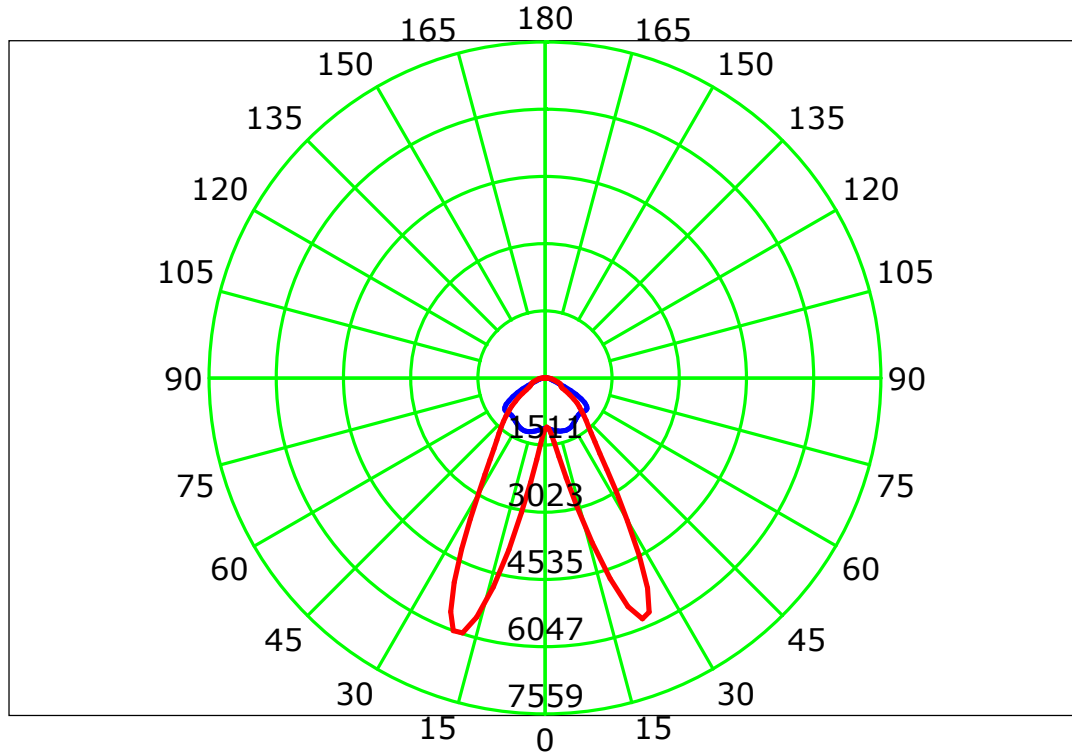
Temperature:

Humidity:

Operator:

Inspector:

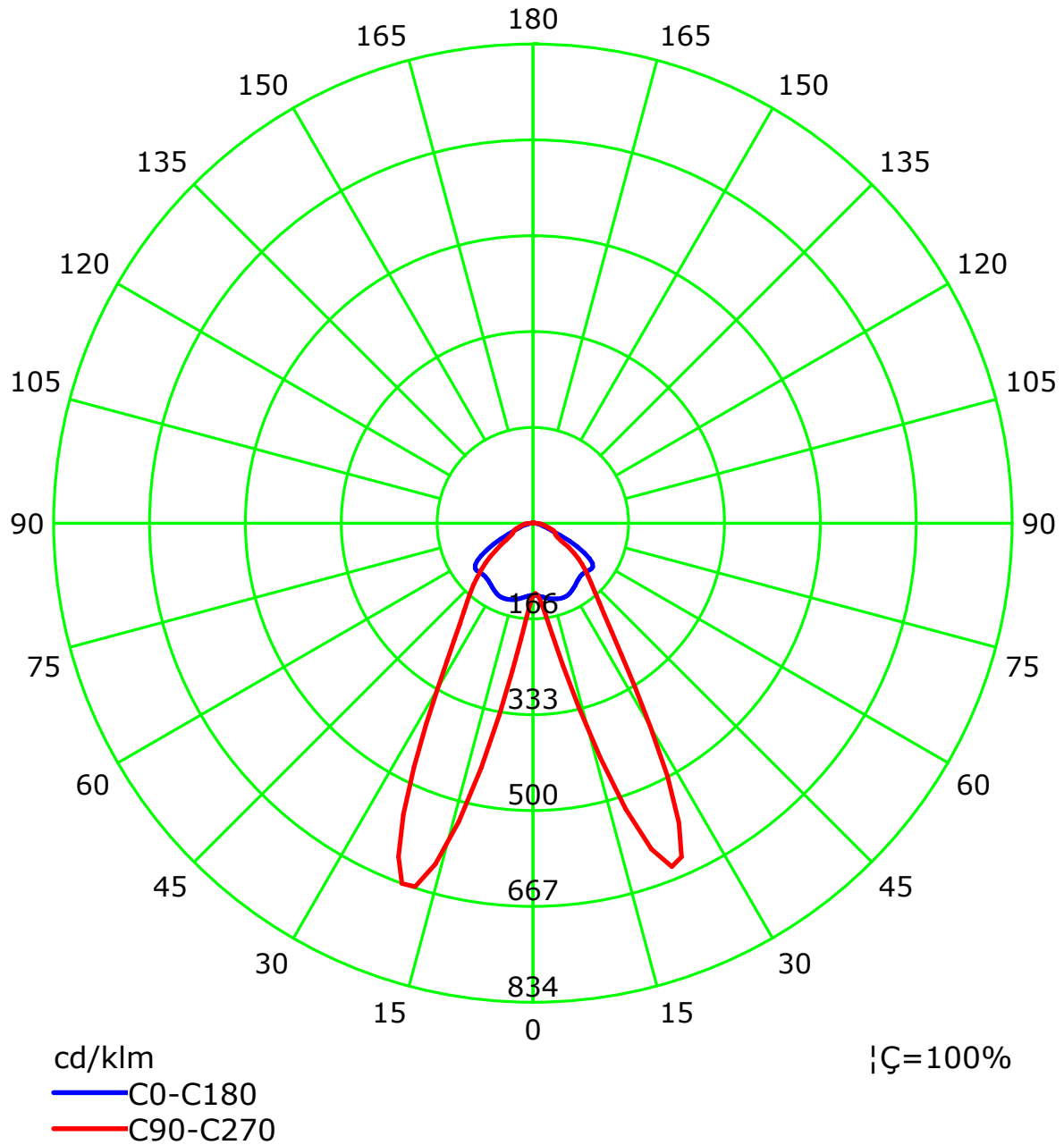
Luminous Intensity Distribution Curve



C Plane (°):0.0-360.0: 22.5
 Test Lab:
 Test Type: TYPE C
 Temperature:
 Operator:

Gamma Plane (°):0.0-180.0:2.0
 Test Device: LSG-1800B
 Distance: 12.677 m
 Humidity:
 Inspector:

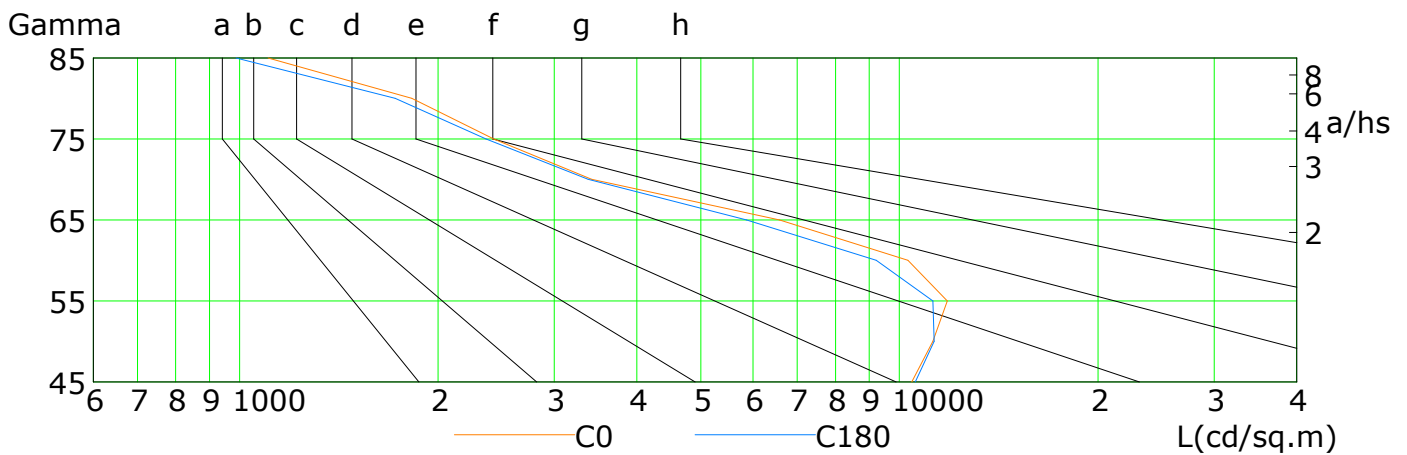
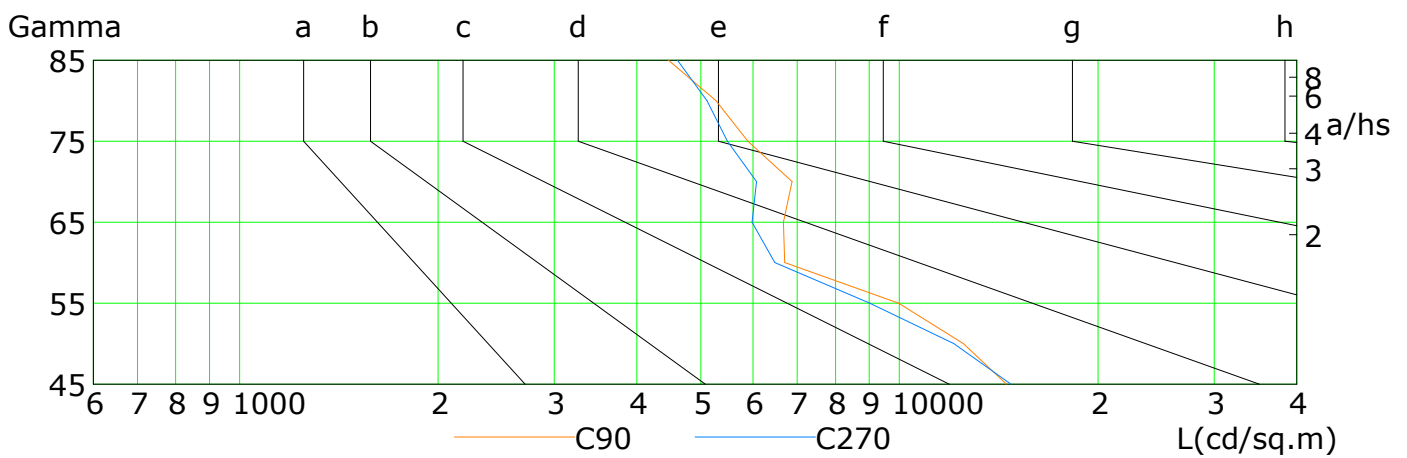
Luminous Intensity Distribution Curve(cd/klm)



Lum Limit Curve

Dazzle	Quality	Illuminance (lx)							
		2000	1000	500	<=300				
1.15	A	2000	1000	500	<=300				
1.50	B		2000	1000	500	<=300			
1.85	C			2000	1000	500	<=300		
2.20	D				2000	1000	500	<=300	
2.55	E					2000	1000	500	<=300

a b c d e f g h



L(cd/sq.m)	G45	G50	G55	G60	G65	G70	G75	G80	G85
C0	10441	11240	11823	10299	6584	3416	2428	1825	1105
C90	14529	12495	9979	6705	6673	6874	5893	5272	4467
C180	10570	11291	11238	9225	5868	3376	2364	1721	988
C270	14759	12080	9020	6476	5983	6073	5485	5107	4610

C Plane (°):0.0-360.0: 22.5

Test Lab:

Test Type: TYPE C

Temperature:

Operator:

Gamma Plane (°):0.0-180.0:2.0

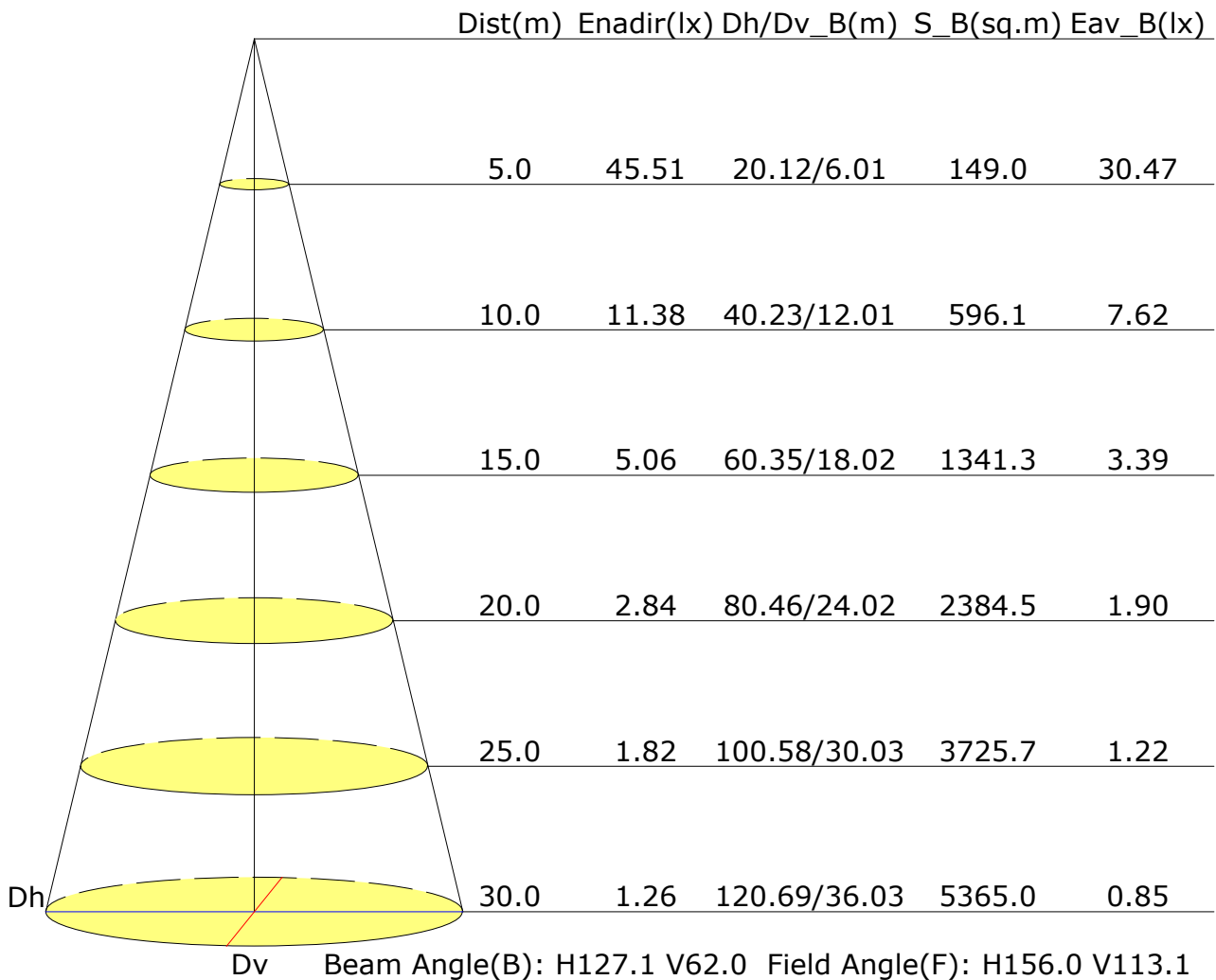
Test Device: LSG-1800B

Distance: 12.677 m

Humidity:

Inspector:

Illuminance at a Distance



UGR Table

Reflectance:										
Ceiling (cavity)	0.7	0.7	0.5	0.5	0.3	0.7	0.7	0.5	0.5	0.3
Wall	0.5	0.3	0.5	0.3	0.3	0.5	0.3	0.5	0.3	0.3
Reference plane	0.2	0.2	0.2	0.2	0.2	0.2	0.2	0.2	0.2	0.2
Room dimensions	Viewed crosswise					Viewed endwise				
X=2H Y=2H	25.1	26.4	25.4	26.6	26.9	19.9	21.2	20.2	21.4	21.7
3H	25.2	26.4	25.6	26.7	27.0	20.2	21.4	20.6	21.7	21.9
4H	25.2	26.3	25.5	26.6	26.9	20.4	21.5	20.8	21.8	22.1
6H	25.1	26.1	25.5	26.5	26.8	20.6	21.6	21.0	21.9	22.3
8H	25.1	26.1	25.5	26.4	26.7	20.7	21.7	21.1	22.0	22.3
12H	25.1	26.0	25.4	26.3	26.7	20.8	21.7	21.2	22.0	22.4
X=4H Y=2H	25.1	26.2	25.4	26.4	26.8	20.9	22.0	21.2	22.3	22.6
3H	25.3	26.2	25.6	26.5	26.9	21.2	22.1	21.6	22.5	22.8
4H	25.3	26.1	25.7	26.4	26.8	21.4	22.2	21.8	22.6	23.0
6H	25.2	26.0	25.7	26.3	26.8	21.6	22.3	22.0	22.7	23.1
8H	25.2	25.9	25.7	26.3	26.7	21.7	22.4	22.2	22.8	23.2
12H	25.2	25.8	25.6	26.2	26.7	21.8	22.4	22.3	22.8	23.3
X=8H Y=4H	25.2	25.9	25.6	26.3	26.7	21.4	22.1	21.9	22.5	22.9
6H	25.2	25.7	25.7	26.2	26.6	21.7	22.2	22.2	22.7	23.2
8H	25.2	25.6	25.7	26.1	26.6	21.8	22.3	22.3	22.8	23.3
12H	25.2	25.6	25.7	26.0	26.6	22.0	22.4	22.5	22.9	23.4
X=12H Y=4H	25.2	25.8	25.6	26.2	26.6	21.4	22.0	21.9	22.4	22.9
6H	25.2	25.6	25.6	26.1	26.6	21.7	22.2	22.2	22.6	23.1
8H	25.2	25.6	25.7	26.0	26.6	21.9	22.3	22.4	22.7	23.3
Variations with the observer position at spacings:										
S=1.0H	+1.6/-1.7					+1.3/-1.8				
S=1.5H	+3.1/-3.8					+2.1/-3.1				
S=2.0H	+3.8/-6.4					+2.9/-3.8				

Calculate in accordance with CIE Pub.117. The table is revised with $9064lm$ ($8\log(F/F_0) = 7.7$).

Utilisation Factor Table(Floor cavity)

Utilisation Factors UF(F)			SHR NOM = 2.00									
Room Reflectance			Room Index(RI)									
Ceiling	Wall	Floor	0.75	1.00	1.25	1.50	2.00	2.50	3.00	4.00	5.00	
0.70	0.50	0.20	NA	0.81	0.86	0.90	0.96	1.00	1.02	1.05	1.07	
	0.30		NA	0.75	0.80	0.85	0.91	0.96	0.98	1.02	1.05	
	0.20		NA	0.71	0.76	0.81	0.88	0.92	0.95	1.00	1.02	
0.50	0.50	0.20	NA	0.79	0.84	0.88	0.93	0.96	0.98	1.01	1.03	
	0.30		NA	0.74	0.79	0.83	0.89	0.93	0.95	0.99	1.01	
	0.20		NA	0.70	0.75	0.80	0.86	0.90	0.93	0.97	0.99	
0.30	0.50	0.20	NA	0.77	0.82	0.85	0.90	0.93	0.95	0.98	0.99	
	0.30		NA	0.73	0.78	0.81	0.87	0.90	0.93	0.96	0.98	
	0.20		NA	0.70	0.74	0.78	0.84	0.88	0.91	0.94	0.96	
0.00	0.00	0.00	NA	0.67	0.72	0.76	0.81	0.84	0.87	0.89	0.91	
<p>Rating:60W Photometrically tested without ceiling board. Multiply UF values by service correction factors Calculate in accordance with CIBSE Technical Memorandum NO.5 1980</p>												

Utilisation Factor Table(Wall)

Utilisation Factors UF(W)			SHR NOM = 2.00									
Room Reflectance			Room Index(RI)									
Ceiling	Wall	Floor	0.75	1.00	1.25	1.50	2.00	2.50	3.00	4.00	5.00	
0.70	0.50	0.20	NA	0.61	0.52	0.45	0.35	0.29	0.25	0.19	0.16	
	0.30		NA	0.52	0.46	0.40	0.32	0.27	0.23	0.18	0.15	
	0.20		NA	0.45	0.40	0.36	0.29	0.24	0.21	0.17	0.14	
0.50	0.50	0.20	NA	0.58	0.50	0.43	0.33	0.31	0.23	0.18	0.15	
	0.30		NA	0.50	0.44	0.38	0.30	0.25	0.22	0.17	0.14	
	0.20		NA	0.44	0.39	0.35	0.28	0.23	0.20	0.16	0.13	
0.30	0.50	0.20	NA	0.55	0.47	0.40	0.31	0.25	0.22	0.17	0.14	
	0.30		NA	0.49	0.42	0.37	0.29	0.24	0.20	0.16	0.13	
	0.20		NA	0.43	0.38	0.34	0.27	0.22	0.19	0.15	0.13	
0.00	0.00	0.00	0.99	0.32	0.28	0.24	0.18	0.15	0.13	0.10	0.08	
<p>Rating:60W Photometrically tested without ceiling board. Multiply UF values by service correction factors Calculate in accordance with CIBSE Technical Memorandum NO.5 1980</p>												

Utilisation Factor Table(Ceiling cavity)

Utilisation Factors UF(C)			SHR NOM = 2.00									
Room Reflectance			Room Index(RI)									
Ceiling	Wall	Floor	0.75	1.00	1.25	1.50	2.00	2.50	3.00	4.00	5.00	
0.70	0.50	0.20	NA	0.16	0.17	0.18	0.19	0.20	0.20	0.21	0.22	
	0.30		NA	0.11	0.13	0.14	0.16	0.17	0.18	0.19	0.20	
	0.20		NA	0.08	0.09	0.11	0.13	0.14	0.15	0.17	0.18	
0.50	0.50	0.20	NA	0.16	0.17	0.17	0.18	0.19	0.20	0.20	0.21	
	0.30		NA	0.11	0.12	0.14	0.15	0.16	0.17	0.18	0.19	
	0.20		NA	0.08	0.09	0.10	0.12	0.14	0.15	0.17	0.17	
0.30	0.50	0.20	NA	0.15	0.16	0.17	0.18	0.18	0.19	0.19	0.20	
	0.30		NA	0.11	0.12	0.13	0.15	0.16	0.17	0.18	0.18	
	0.20		NA	0.08	0.09	0.10	0.12	0.14	0.15	0.16	0.17	
0.00	0.00	0.00	0.01	0.01	0.01	0.01	0.01	0.01	0.01	0.01	0.01	
<p>Rating:60W Photometrically tested without ceiling board. Multiply UF values by service correction factors Calculate in accordance with CIBSE Technical Memorandum NO.5 1980</p>												