

Report No.:

Test Time: 16.04.2020 15:02

Luminaire Property

Luminaire Manufacturer:

Luminaire Description: FT 185 47W 3000K linza 88x35 gr. N IPS 50-382

Luminous Length (mm): 587

Luminous Width (mm): 177

Luminous Height (mm): 73

Voltage: 229.1 V

Current: 0.224 A

Power: 50.14 W

Power Factor: 0.976

Photometric Results

CIE Class: Direct

Total Rated Lamp Lumens: 6922.9 lm

Measurement Flux: 6922.9 lm

Efficiency: 100%

Downward Ratio: 98%

Upward Ratio: 2%

Field Angle(C0/C180,C90/C270,C45/C225,C135/315): 135.7, 91.9, 99.8, 99.4

Beam Angle(C0/C180,C90/C270,C45/C225,C135/315): 87.0, 34.7, 44.6, 44.7

Luminaire Efficacy Rating (LER): 138.12

Central Intensity: 6175.22 cd

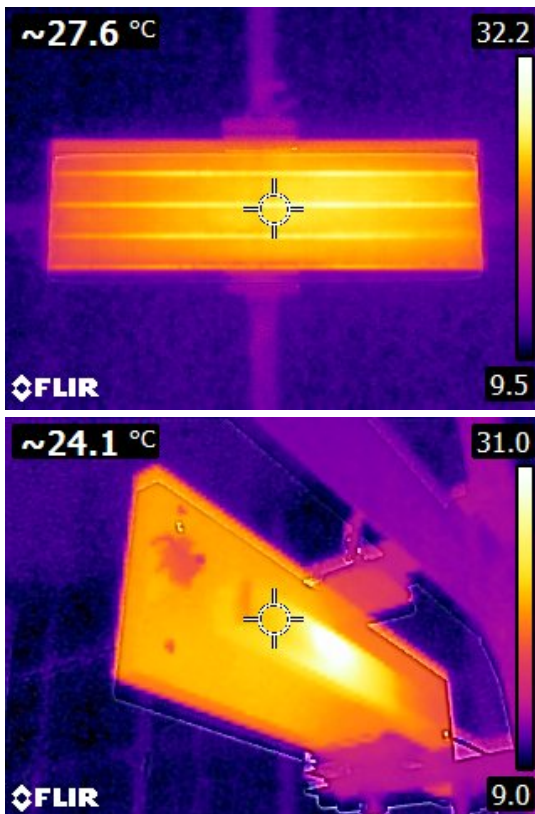
Max. Intensity: 6175.23 cd

Pos of Max. Intensity: H0 V0

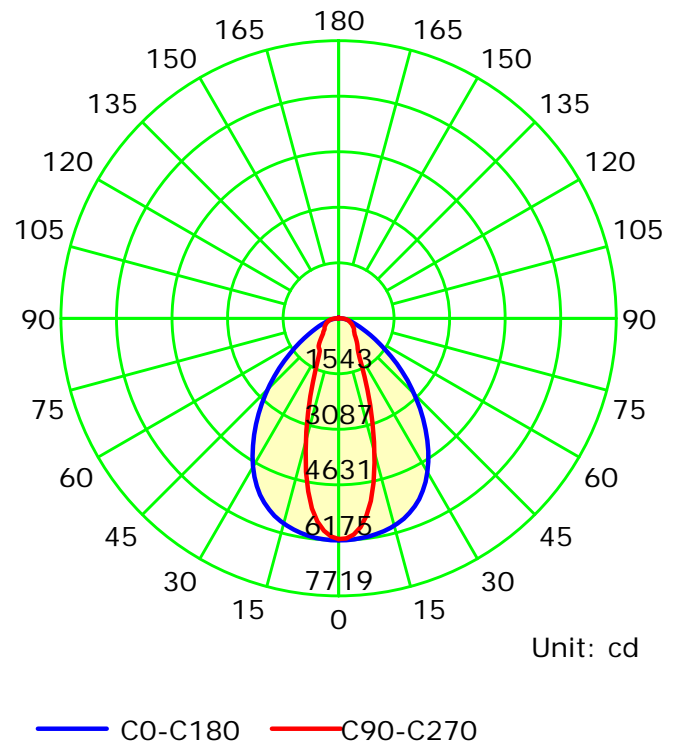
S/MH(C0/C180): 1.17

S/MH(C90/C270): 0.57

Termogramma



Luminous Intensity Distribution Curve



C Plane (°):0.0-360.0: 22.5

Gamma Plane (°):0.0-180.0:2.0

Test Lab:

Test Device: LSG-1800B

Test Type: TYPE C

Distance: 12.677 m

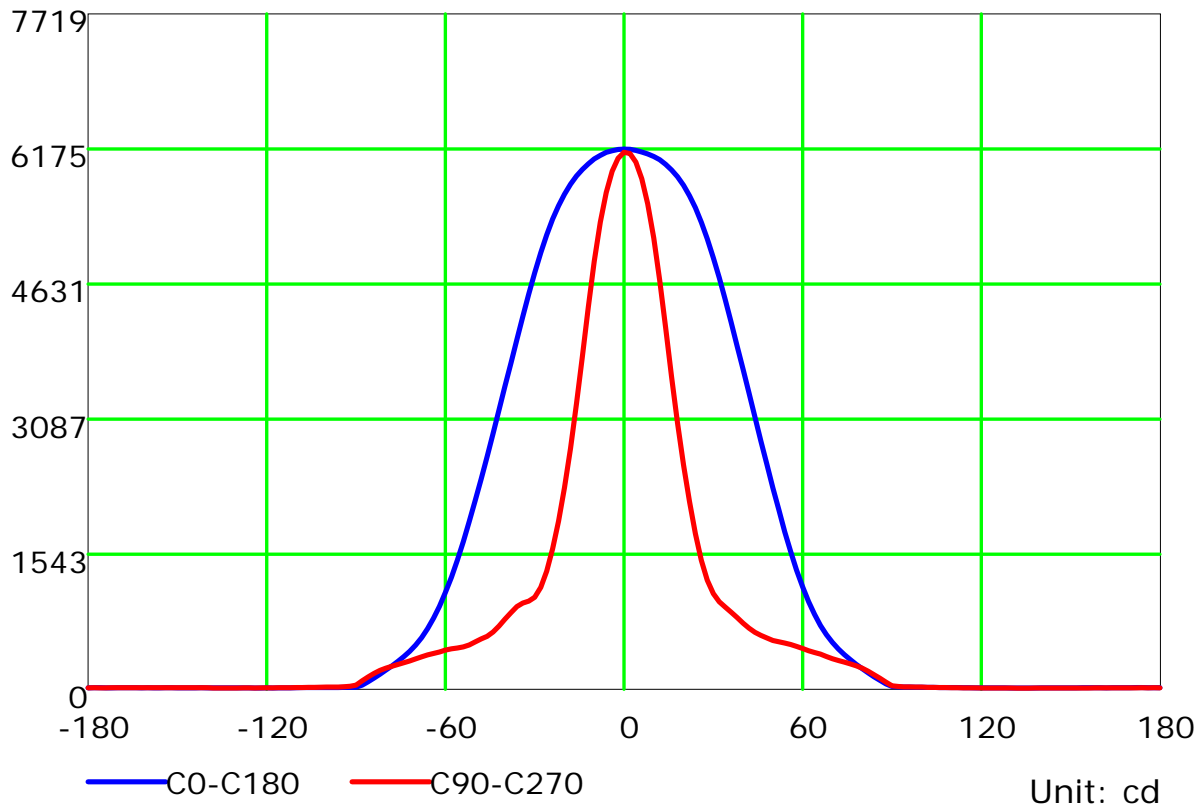
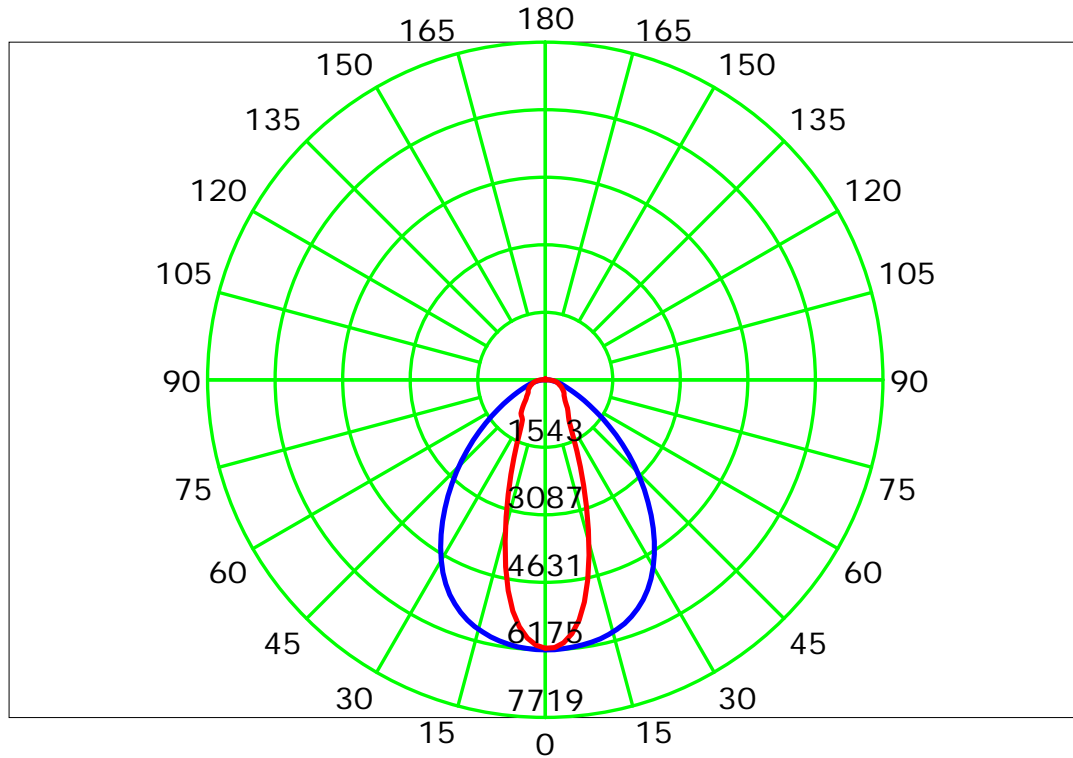
Temperature:

Humidity:

Operator:

Inspector:

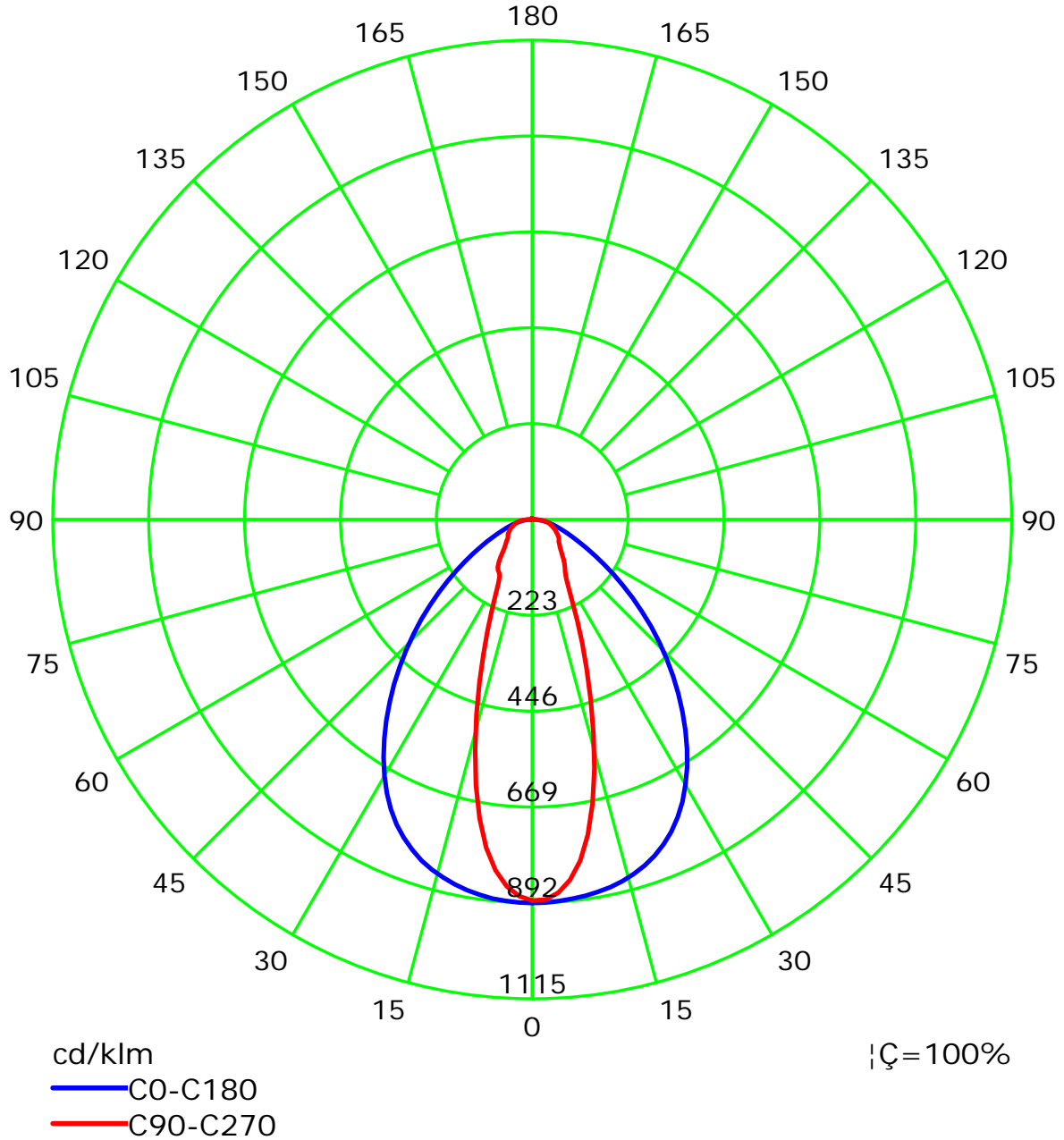
Luminous Intensity Distribution Curve



C Plane (°):0.0-360.0: 22.5
 Test Lab:
 Test Type: TYPE C
 Temperature:
 Operator:

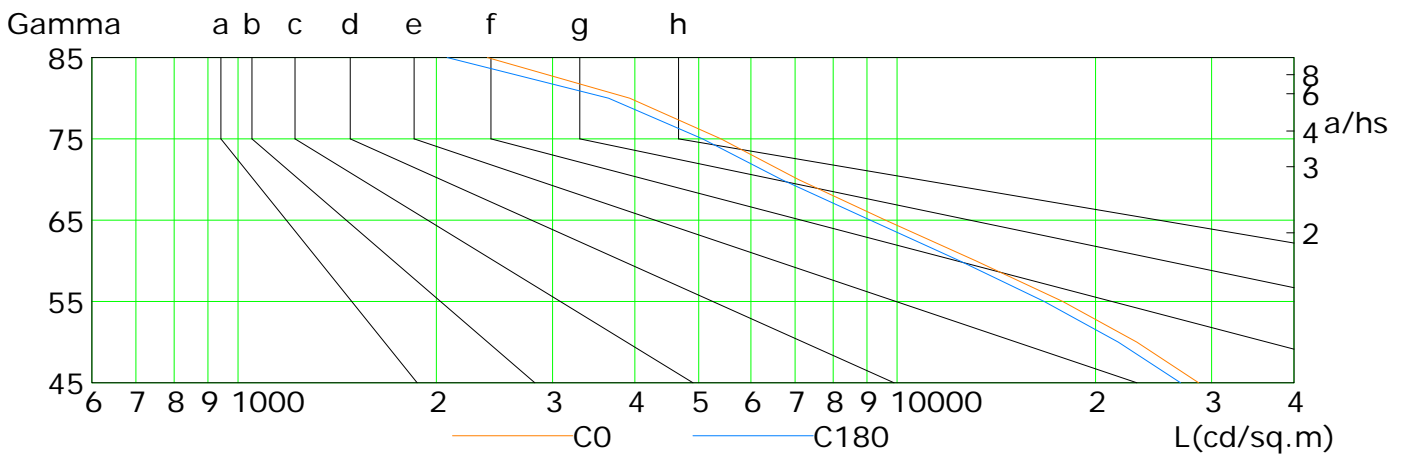
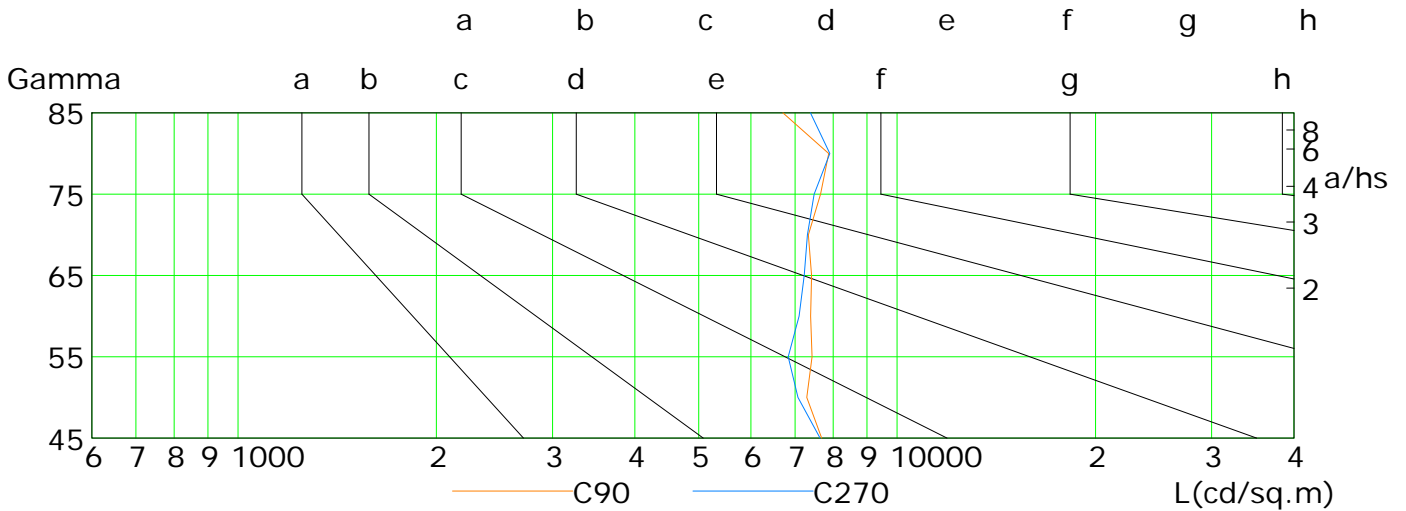
Gamma Plane (°):0.0-180.0:2.0
 Test Device: LSG-1800B
 Distance: 12.677 m
 Humidity:
 Inspector:

Luminous Intensity Distribution Curve(cd/klm)



Lum Limit Curve

Dazzle	Quality	Illuminance (lx)							
		a	b	c	d	e	f	g	h
1.15	A	2000	1000	500	<=300				
1.50	B		2000	1000	500	<=300			
1.85	C			2000	1000	500	<=300		
2.20	D				2000	1000	500	<=300	
2.55	E					2000	1000	500	<=300



L(cd/sq.m)	G45	G50	G55	G60	G65	G70	G75	G80	G85
C0	28668	23109	17830	13163	9602	7085	5405	3929	2390
C90	7683	7292	7428	7390	7417	7333	7652	7875	6708
C180	26910	21650	16715	12438	9104	6677	5068	3650	2076
C270	7638	7073	6834	7101	7226	7308	7483	7904	7387

C Plane (°):0.0-360.0: 22.5

Test Lab:

Test Type: TYPE C

Temperature:

Operator:

Gamma Plane (°):0.0-180.0:2.0

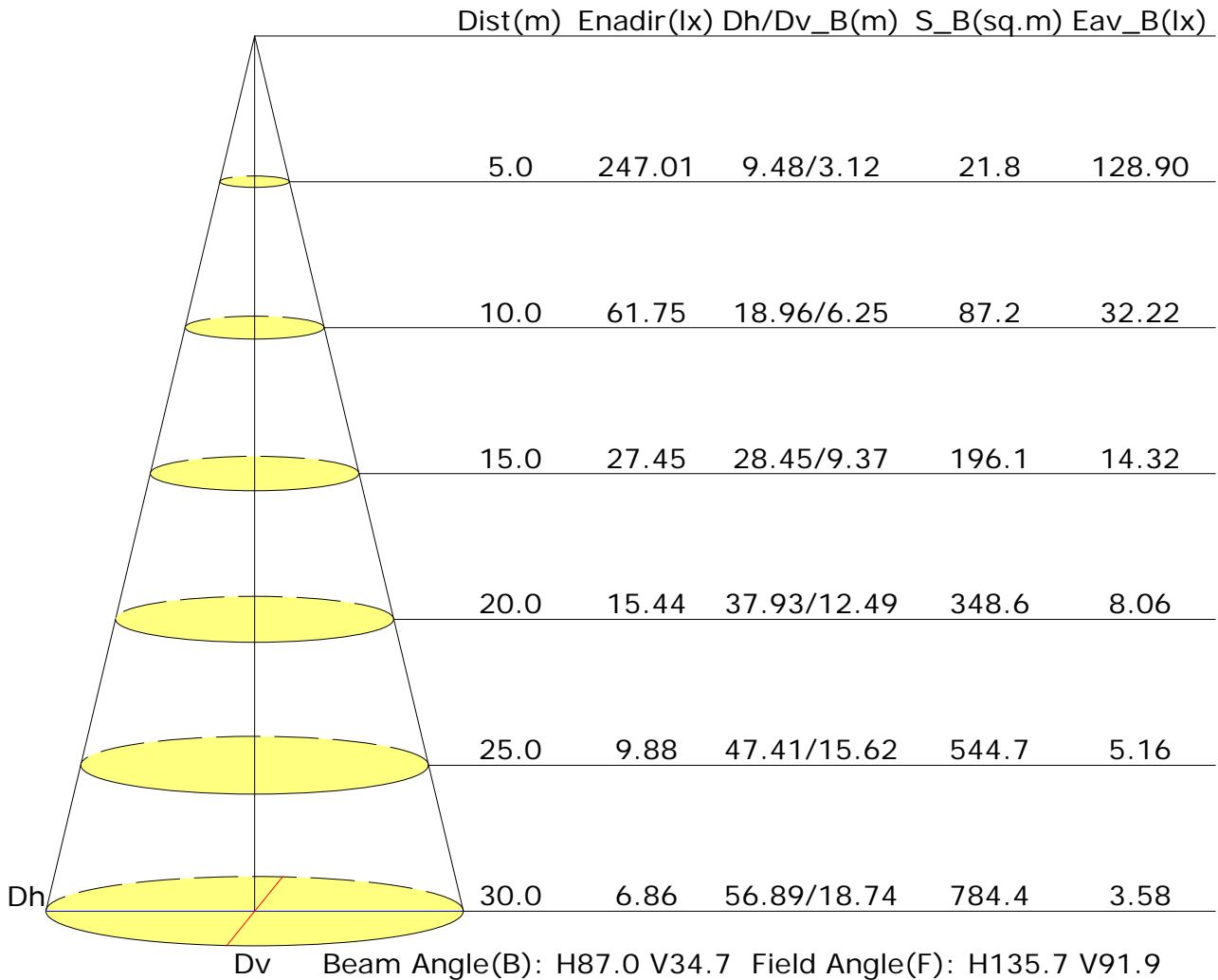
Test Device: LSG-1800B

Distance: 12.677 m

Humidity:

Inspector:

Illuminance at a Distance



UGR Table

Reflectance:										
Ceiling (cavity)	0.7	0.7	0.5	0.5	0.3	0.7	0.7	0.5	0.5	0.3
Wall	0.5	0.3	0.5	0.3	0.3	0.5	0.3	0.5	0.3	0.3
Reference plane	0.2	0.2	0.2	0.2	0.2	0.2	0.2	0.2	0.2	0.2
Room dimensions	Viewed crosswise					Viewed endwise				
X=2H Y=2H	20.9	22.0	21.2	22.3	22.5	16.4	17.5	16.7	17.7	18.0
3H	21.7	22.7	22.0	23.0	23.3	18.3	19.3	18.6	19.6	19.9
4H	22.0	23.0	22.3	23.3	23.6	19.3	20.2	19.6	20.5	20.9
6H	22.2	23.1	22.6	23.4	23.8	20.2	21.1	20.6	21.4	21.8
8H	22.3	23.1	22.7	23.5	23.8	20.6	21.5	21.0	21.8	22.2
12H	22.3	23.1	22.7	23.5	23.9	20.9	21.8	21.3	22.1	22.5
X=4H Y=2H	20.9	21.9	21.3	22.2	22.5	17.0	18.0	17.4	18.3	18.6
3H	21.8	22.7	22.2	23.0	23.4	19.1	20.0	19.5	20.3	20.7
4H	22.3	23.0	22.7	23.4	23.8	20.2	21.0	20.7	21.4	21.8
6H	22.6	23.3	23.0	23.7	24.1	21.4	22.0	21.8	22.4	22.9
8H	22.7	23.3	23.2	23.8	24.2	21.8	22.5	22.3	22.9	23.3
12H	22.8	23.3	23.3	23.8	24.3	22.2	22.8	22.7	23.2	23.7
X=8H Y=4H	22.4	23.0	22.8	23.4	23.9	20.5	21.1	21.0	21.6	22.0
6H	22.8	23.3	23.3	23.8	24.3	21.8	22.3	22.3	22.8	23.3
8H	23.0	23.4	23.5	23.9	24.4	22.4	22.9	22.9	23.4	23.9
12H	23.1	23.5	23.6	24.0	24.5	22.9	23.3	23.5	23.8	24.4
X=12H Y=4H	22.4	22.9	22.9	23.4	23.9	20.5	21.1	21.0	21.5	22.0
6H	22.9	23.3	23.4	23.8	24.3	21.9	22.3	22.4	22.8	23.3
8H	23.0	23.4	23.6	23.9	24.5	22.5	22.9	23.1	23.4	24.0
Variations with the observer position at spacings:										
S=1.0H	+0.8/-0.8					+0.2/-0.3				
S=1.5H	+2.0/-1.6					+0.3/-0.5				
S=2.0H	+3.3/-2.3					+0.5/-0.6				

Calculate in accordance with CIE Pub.117. The table is revised with 6923Im ($8\log(F/F_0) = 6.7$).

Utilisation Factor Table(Floor cavity)

Utilisation Factors UF(F)			SHR NOM = 0.75									
Room Reflectance			Room Index(RI)									
Ceiling	Wall	Floor	0.75	1.00	1.25	1.50	2.00	2.50	3.00	4.00	5.00	
0.70	0.50	0.20	0.66	0.75	0.81	0.86	0.92	0.96	0.99	1.03	1.05	
	0.30		0.60	0.68	0.75	0.79	0.86	0.91	0.94	0.99	1.02	
	0.20		0.55	0.63	0.70	0.75	0.82	0.87	0.91	0.96	0.99	
0.50	0.50	0.20	0.65	0.73	0.78	0.83	0.88	0.92	0.95	0.98	1.01	
	0.30		0.59	0.67	0.73	0.78	0.84	0.88	0.91	0.95	0.98	
	0.20		0.54	0.63	0.69	0.73	0.80	0.85	0.88	0.93	0.96	
0.30	0.50	0.20	0.63	0.71	0.76	0.80	0.85	0.89	0.91	0.94	0.96	
	0.30		0.58	0.66	0.71	0.76	0.82	0.85	0.88	0.92	0.94	
	0.20		0.54	0.62	0.68	0.72	0.78	0.83	0.86	0.90	0.92	
0.00	0.00	0.00	0.52	0.59	0.65	0.69	0.75	0.79	0.81	0.85	0.87	
<p>Rating: 50W Photometrically tested without ceiling board. Multiply UF values by service correction factors Calculate in accordance with CIBSE Technical Memorandum NO.5 1980</p>												

Utilisation Factor Table(Wall)

Utilisation Factors UF(W)			SHR NOM = 0.75									
Room Reflectance			Room Index(RI)									
Ceiling	Wall	Floor	0.75	1.00	1.25	1.50	2.00	2.50	3.00	4.00	5.00	
0.70	0.50	0.20	0.85	0.70	0.60	0.52	0.42	0.35	0.30	0.23	0.19	
	0.30		0.71	0.60	0.52	0.46	0.38	0.32	0.28	0.22	0.18	
	0.20		0.61	0.53	0.46	0.42	0.35	0.30	0.26	0.21	0.17	
0.50	0.50	0.20	0.81	0.67	0.57	0.50	0.40	0.37	0.28	0.22	0.18	
	0.30		0.69	0.58	0.50	0.45	0.36	0.31	0.26	0.21	0.17	
	0.20		0.60	0.51	0.45	0.40	0.33	0.28	0.25	0.20	0.17	
0.30	0.50	0.20	0.79	0.64	0.54	0.47	0.38	0.31	0.27	0.21	0.17	
	0.30		0.67	0.56	0.49	0.43	0.35	0.29	0.25	0.20	0.16	
	0.20		0.59	0.50	0.44	0.39	0.32	0.27	0.24	0.19	0.16	
0.00	0.00	0.00	0.47	0.40	0.34	0.30	0.24	0.20	0.18	0.14	0.11	
<p>Rating: 50W Photometrically tested without ceiling board. Multiply UF values by service correction factors Calculate in accordance with CIBSE Technical Memorandum NO.5 1980</p>												

Utilisation Factor Table(Ceiling cavity)

Utilisation Factors UF(C)			SHR NOM = 0.75								
Room Reflectance			Room Index(RI)								
Ceiling	Wall	Floor	0.75	1.00	1.25	1.50	2.00	2.50	3.00	4.00	5.00
0.70	0.50	0.20	0.17	0.18	0.19	0.20	0.21	0.22	0.22	0.23	0.23
	0.30		0.11	0.13	0.14	0.15	0.17	0.18	0.19	0.20	0.21
	0.20		0.07	0.08	0.10	0.11	0.13	0.15	0.16	0.18	0.19
0.50	0.50	0.20	0.16	0.17	0.18	0.19	0.20	0.21	0.21	0.22	0.22
	0.30		0.11	0.12	0.14	0.15	0.16	0.17	0.18	0.19	0.20
	0.20		0.07	0.08	0.10	0.11	0.13	0.14	0.16	0.17	0.18
0.30	0.50	0.20	0.16	0.17	0.18	0.18	0.19	0.20	0.20	0.21	0.21
	0.30		0.10	0.12	0.13	0.14	0.16	0.17	0.18	0.19	0.19
	0.20		0.07	0.08	0.10	0.11	0.13	0.14	0.15	0.17	0.18
0.00	0.00	0.00	0.02	0.02	0.02	0.02	0.02	0.02	0.02	0.02	0.02
<p>Rating: 50W Photometrically tested without ceiling board. Multiply UF values by service correction factors Calculate in accordance with CIBSE Technical Memorandum NO.5 1980</p>											