

Report No.: 1

Test Time: 26.03.2020 19:07

## Luminaire Property

Luminaire Manufacturer:

Luminaire Description: FG 50 (1500) 4x70LED 76W 5000K прозрачный с линзой 60 гр. DALI

Luminous Length (mm): 1545

Luminous Width (mm): 55

Luminous Height (mm): 80

Voltage: 229.1 V

Current: 0.335 A

Power: 75.22 W

Power Factor: 0.978

## Photometric Results

CIE Class: Direct

Total Rated Lamp Lumens: 10717.5 lm

Measurement Flux: 10717.5 lm

Efficiency: 100%

Downward Ratio: 99%

Upward Ratio: 1%

Field Angle(C0/C180,C90/C270,C45/C225,C135/315): 147.9, 102.6, 114.9, 115.9

Beam Angle(C0/C180,C90/C270,C45/C225,C135/315): 114.8, 61.4, 73.7, 74.4

Luminaire Efficacy Rating (LER): 142.53

Central Intensity: 5956.79 cd

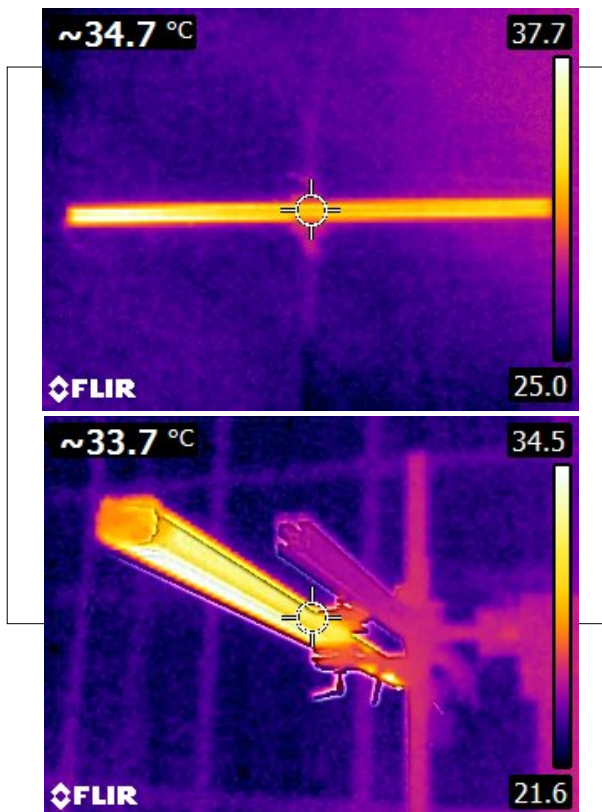
Max. Intensity: 6270.73 cd

Pos of Max. Intensity: H270 V10

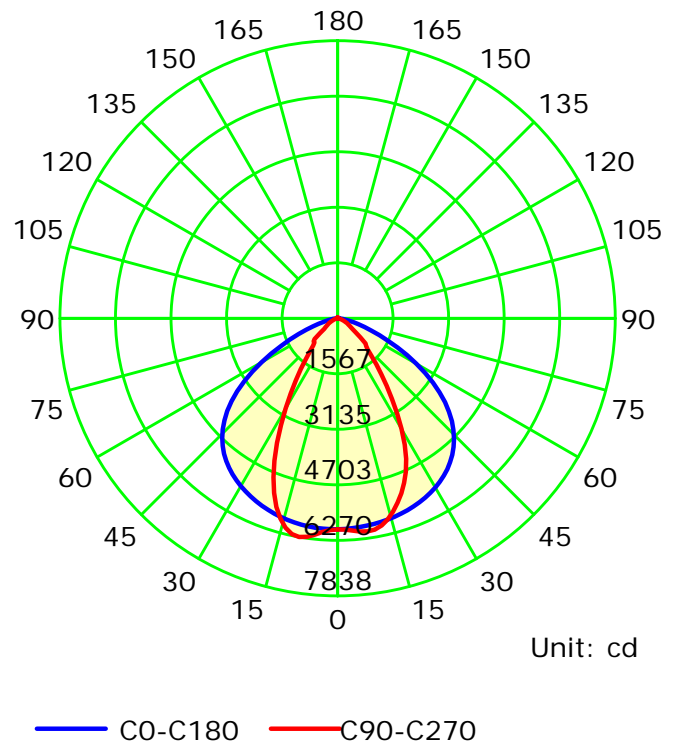
S/MH(C0/C180): 1.37

S/MH(C90/C270): 0.98

Termogramma



Luminous Intensity Distribution Curve



C Plane (°):0.0-360.0: 22.5

Gamma Plane (°):0.0-180.0:2.0

Test Lab:

Test Device: LSG-1800B

Test Type: TYPE C

Distance: 12.677 m

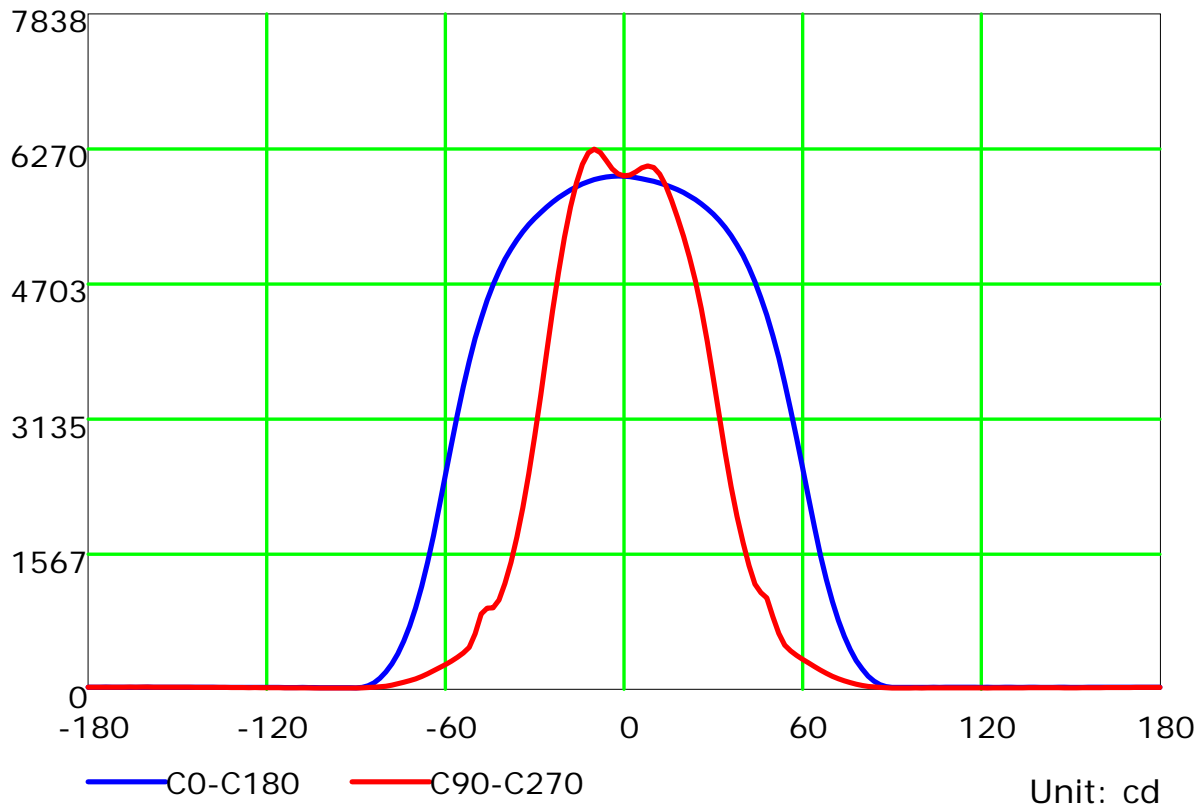
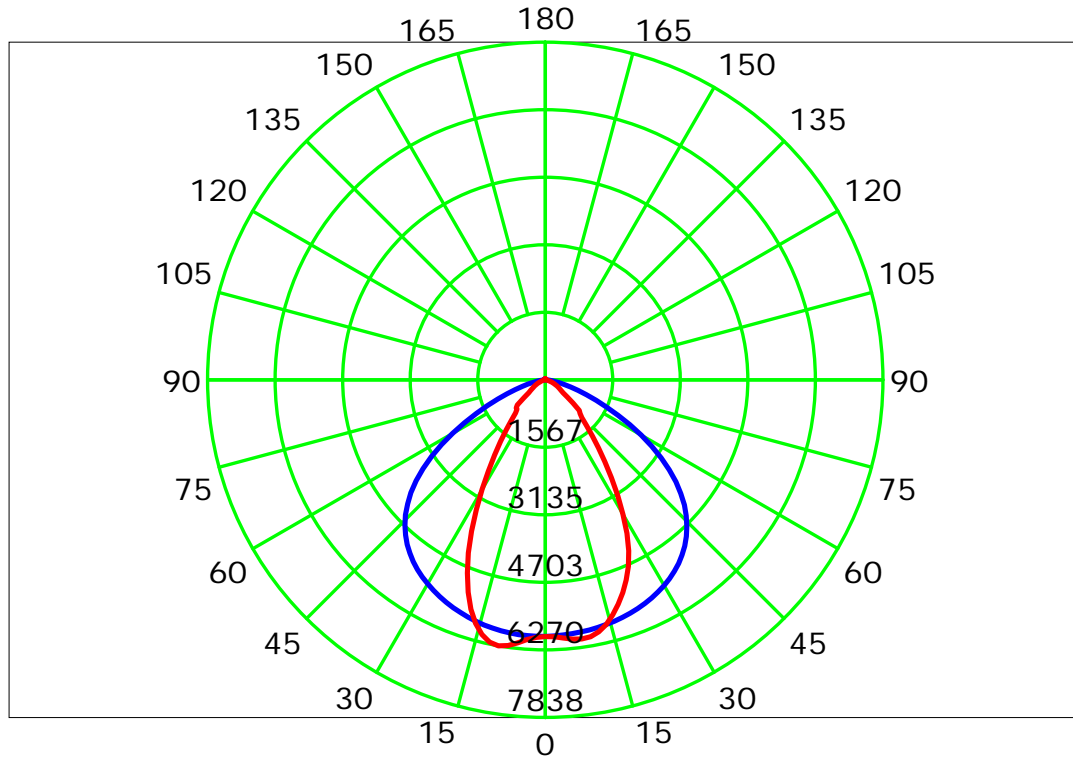
Temperature:

Humidity:

Operator:

Inspector:

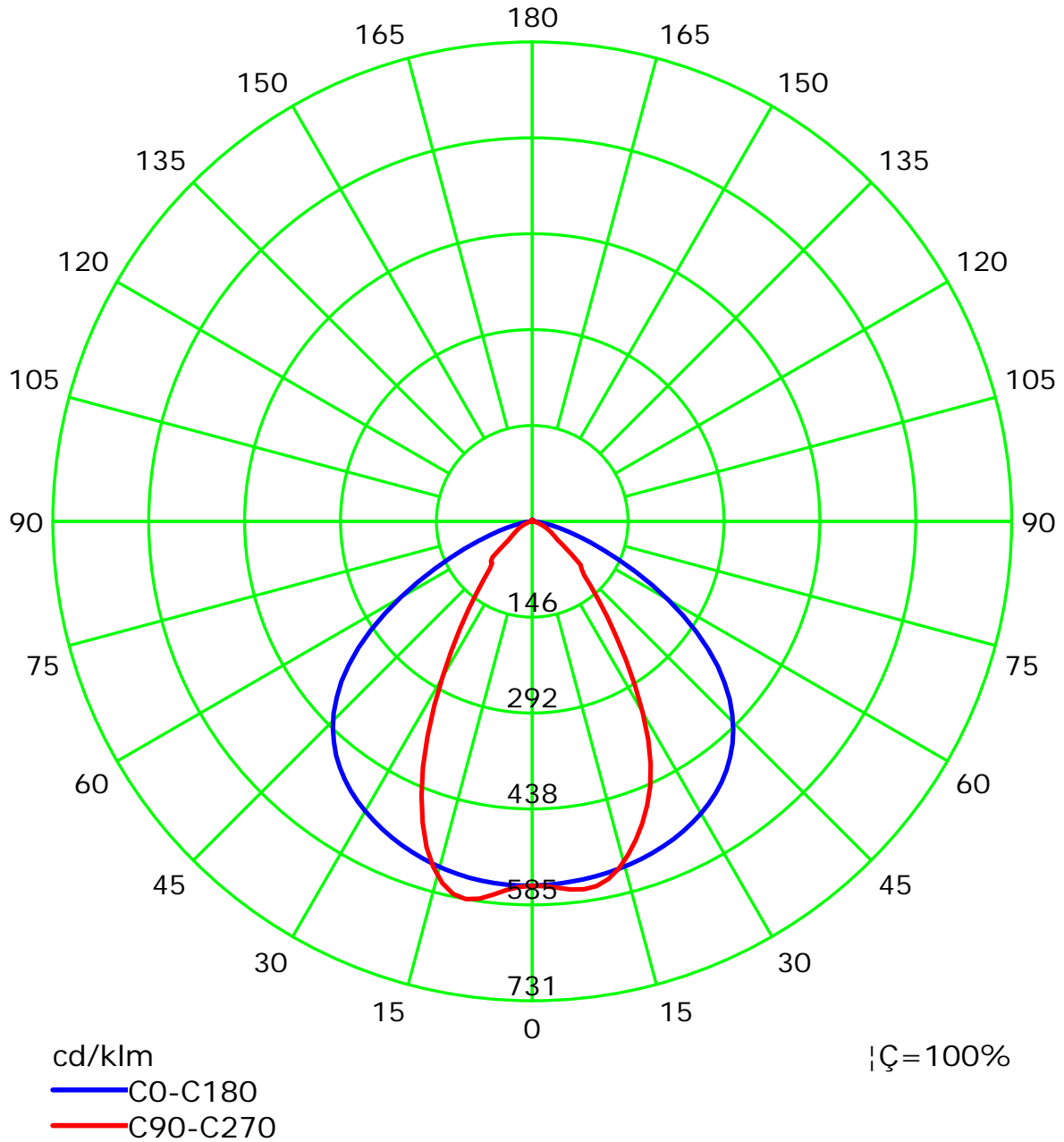
## Luminous Intensity Distribution Curve



C Plane (°):0.0-360.0: 22.5  
 Test Lab:  
 Test Type: TYPE C  
 Temperature:  
 Operator:

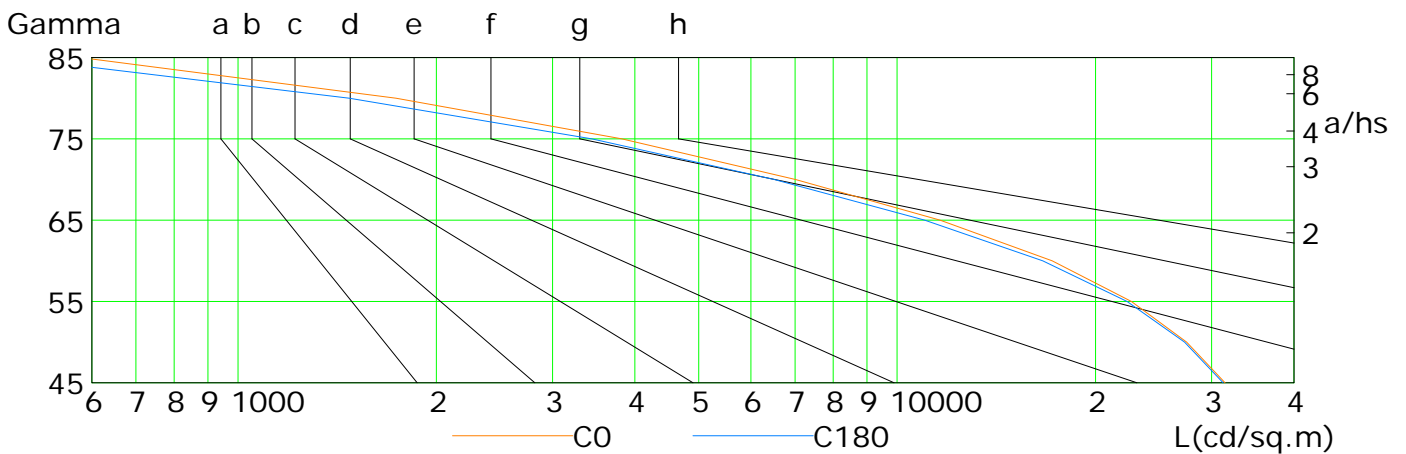
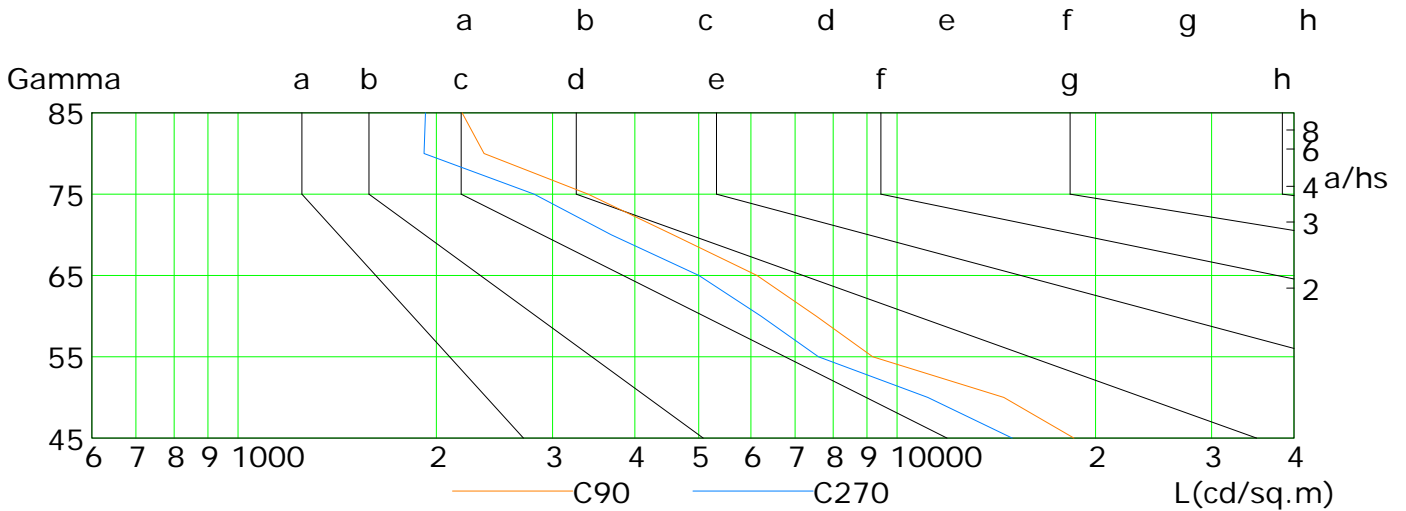
Gamma Plane (°):0.0-180.0:2.0  
 Test Device: LSG-1800B  
 Distance: 12.677 m  
 Humidity:  
 Inspector:

## Luminous Intensity Distribution Curve(cd/klm)



## Lum Limit Curve

Dazzle	Quality	Illuminance (lx)							
		a	b	c	d	e	f	g	h
1.15	A	2000	1000	500	<=300				
1.50	B		2000	1000	500	<=300			
1.85	C			2000	1000	500	<=300		
2.20	D				2000	1000	500	<=300	
2.55	E					2000	1000	500	<=300



L(cd/sq.m)	G45	G50	G55	G60	G65	G70	G75	G80	G85
C0	31447	27488	22672	17190	11623	7014	3824	1737	577
C90	18550	14517	9185	7538	6128	4573	3398	2363	2188
C180	31226	27291	22332	16626	11014	6510	3442	1475	453
C270	14949	11132	7597	6214	5002	3685	2814	1915	1925

C Plane (°):0.0-360.0: 22.5

Test Lab:

Test Type: TYPE C

Temperature:

Operator:

Gamma Plane (°):0.0-180.0:2.0

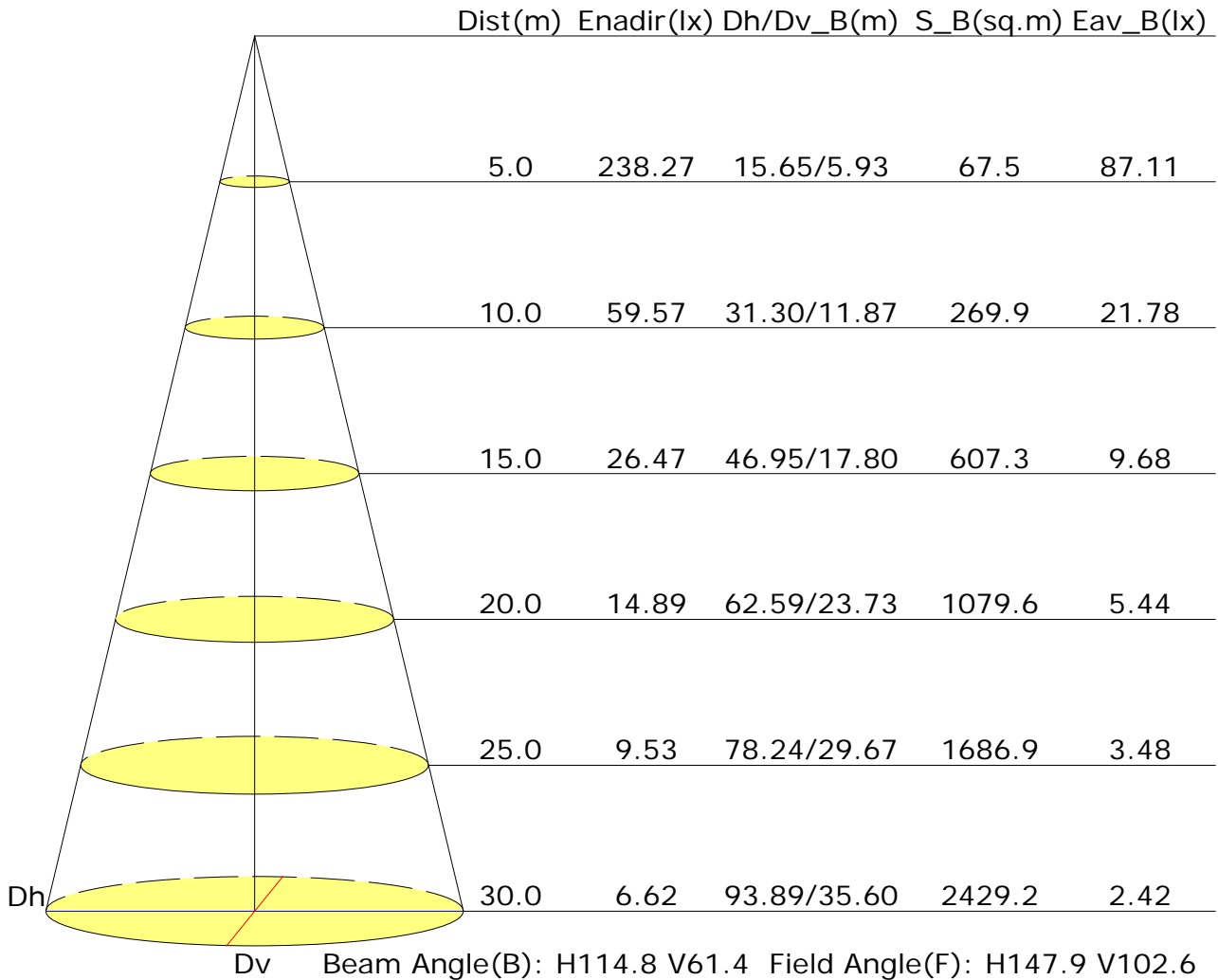
Test Device: LSG-1800B

Distance: 12.677 m

Humidity:

Inspector:

## Illuminance at a Distance



## UGR Table

Reflectance:										
Ceiling (cavity)	0.7	0.7	0.5	0.5	0.3	0.7	0.7	0.5	0.5	0.3
Wall	0.5	0.3	0.5	0.3	0.3	0.5	0.3	0.5	0.3	0.3
Reference plane	0.2	0.2	0.2	0.2	0.2	0.2	0.2	0.2	0.2	0.2
Room dimensions	Viewed crosswise					Viewed endwise				
X=2H Y=2H	22.8	23.9	23.1	24.2	24.4	17.0	18.2	17.3	18.4	18.7
3H	23.3	24.3	23.6	24.6	24.9	17.2	18.2	17.5	18.5	18.8
4H	23.4	24.4	23.7	24.7	25.0	17.2	18.2	17.6	18.5	18.8
6H	23.4	24.3	23.8	24.6	24.9	17.2	18.1	17.6	18.4	18.8
8H	23.4	24.2	23.7	24.5	24.9	17.2	18.1	17.6	18.4	18.7
12H	23.3	24.1	23.7	24.5	24.8	17.2	18.0	17.6	18.4	18.7
X=4H Y=2H	22.6	23.6	23.0	23.9	24.2	17.3	18.3	17.6	18.6	18.9
3H	23.2	24.0	23.6	24.4	24.7	17.5	18.4	17.9	18.7	19.1
4H	23.3	24.0	23.7	24.4	24.8	17.6	18.3	18.0	18.7	19.1
6H	23.3	24.0	23.8	24.4	24.8	17.6	18.2	18.0	18.6	19.1
8H	23.3	23.9	23.8	24.3	24.8	17.6	18.2	18.0	18.6	19.0
12H	23.3	23.8	23.8	24.3	24.7	17.6	18.1	18.0	18.5	19.0
X=8H Y=4H	23.2	23.8	23.7	24.2	24.7	17.6	18.2	18.1	18.6	19.1
6H	23.3	23.7	23.7	24.2	24.7	17.6	18.1	18.1	18.6	19.0
8H	23.3	23.7	23.7	24.1	24.6	17.6	18.0	18.1	18.5	19.0
12H	23.2	23.6	23.7	24.1	24.6	17.6	18.0	18.1	18.5	19.0
X=12H Y=4H	23.2	23.7	23.6	24.1	24.6	17.6	18.1	18.1	18.6	19.0
6H	23.2	23.6	23.7	24.1	24.6	17.6	18.0	18.1	18.5	19.0
8H	23.2	23.6	23.7	24.1	24.6	17.6	18.0	18.1	18.5	19.0
Variations with the observer position at spacings:										
S=1.0H	+0.5/-1.0					+1.5/-2.2				
S=1.5H	+2.0/-2.9					+2.9/-3.2				
S=2.0H	+3.6/-4.9					+4.4/-4.4				

Calculate in accordance with CIE Pub.117. The table is revised with 10718lm ( $8\log(F/F_0) = 8.2$ ).

C Plane (°):0.0-360.0: 22.5  
 Test Lab:  
 Test Type: TYPE C  
 Temperature:  
 Operator:

Gamma Plane (°):0.0-180.0:2.0  
 Test Device: LSG-1800B  
 Distance: 12.677 m  
 Humidity:  
 Inspector:

## Utilisation Factor Table(Floor cavity)

Utilisation Factors UF(F)			SHR NOM = 1.00									
Room Reflectance			Room Index(RI)									
Ceiling	Wall	Floor	0.75	1.00	1.25	1.50	2.00	2.50	3.00	4.00	5.00	
0.70	0.50	0.20	0.67	0.77	0.83	0.88	0.94	0.98	1.01	1.04	1.07	
	0.30		0.61	0.71	0.77	0.82	0.89	0.94	0.97	1.01	1.04	
	0.20		0.56	0.66	0.73	0.78	0.85	0.90	0.94	0.98	1.01	
0.50	0.50	0.20	0.66	0.75	0.81	0.85	0.91	0.95	0.97	1.00	1.02	
	0.30		0.60	0.70	0.76	0.81	0.87	0.91	0.94	0.98	1.00	
	0.20		0.56	0.65	0.72	0.77	0.83	0.88	0.91	0.95	0.98	
0.30	0.50	0.20	0.64	0.73	0.79	0.83	0.88	0.91	0.94	0.96	0.98	
	0.30		0.59	0.68	0.74	0.79	0.85	0.88	0.91	0.94	0.97	
	0.20		0.55	0.65	0.71	0.75	0.82	0.86	0.89	0.93	0.95	
0.00	0.00	0.00	0.53	0.62	0.68	0.72	0.78	0.82	0.85	0.88	0.90	
<p>Rating: 75W Photometrically tested without ceiling board.            Multiply UF values by service correction factors            Calculate in accordance with CIBSE Technical Memorandum NO.5 1980</p>												

## Utilisation Factor Table(Wall)

Utilisation Factors UF(W)			SHR NOM = 1.00									
Room Reflectance			Room Index(RI)									
Ceiling	Wall	Floor	0.75	1.00	1.25	1.50	2.00	2.50	3.00	4.00	5.00	
0.70	0.50	0.20	0.83	0.67	0.56	0.48	0.38	0.31	0.26	0.20	0.16	
	0.30		0.69	0.57	0.49	0.43	0.34	0.29	0.24	0.19	0.16	
	0.20		0.59	0.50	0.43	0.38	0.31	0.26	0.23	0.18	0.15	
0.50	0.50	0.20	0.79	0.64	0.53	0.46	0.36	0.33	0.25	0.19	0.15	
	0.30		0.67	0.55	0.47	0.41	0.33	0.27	0.23	0.18	0.15	
	0.20		0.58	0.49	0.42	0.37	0.30	0.25	0.22	0.17	0.14	
0.30	0.50	0.20	0.77	0.61	0.51	0.43	0.34	0.27	0.23	0.18	0.14	
	0.30		0.65	0.53	0.45	0.39	0.31	0.26	0.22	0.17	0.14	
	0.20		0.57	0.48	0.41	0.36	0.29	0.24	0.21	0.16	0.13	
0.00	0.00	0.00	0.46	0.37	0.31	0.26	0.21	0.17	0.14	0.11	0.09	
<p>Rating: 75W Photometrically tested without ceiling board.            Multiply UF values by service correction factors            Calculate in accordance with CIBSE Technical Memorandum NO.5 1980</p>												

## Utilisation Factor Table(Ceiling cavity)

Utilisation Factors UF(C)			SHR NOM = 1.00								
Room Reflectance			Room Index(RI)								
Ceiling	Wall	Floor	0.75	1.00	1.25	1.50	2.00	2.50	3.00	4.00	5.00
0.70	0.50	0.20	0.16	0.17	0.18	0.19	0.20	0.21	0.21	0.22	0.22
	0.30		0.10	0.12	0.13	0.15	0.16	0.17	0.18	0.20	0.20
	0.20		0.06	0.08	0.10	0.11	0.13	0.15	0.16	0.17	0.19
0.50	0.50	0.20	0.15	0.17	0.18	0.18	0.19	0.20	0.20	0.21	0.21
	0.30		0.10	0.12	0.13	0.14	0.16	0.17	0.18	0.19	0.20
	0.20		0.06	0.08	0.10	0.11	0.13	0.14	0.15	0.17	0.18
0.30	0.50	0.20	0.15	0.16	0.17	0.18	0.19	0.19	0.20	0.20	0.20
	0.30		0.10	0.12	0.13	0.14	0.15	0.16	0.17	0.18	0.19
	0.20		0.06	0.08	0.09	0.11	0.13	0.14	0.15	0.16	0.17
0.00	0.00	0.00	0.01	0.01	0.01	0.01	0.01	0.01	0.01	0.01	0.01
<p>Rating: 75W Photometrically tested without ceiling board.            Multiply UF values by service correction factors            Calculate in accordance with CIBSE Technical Memorandum NO.5 1980</p>											